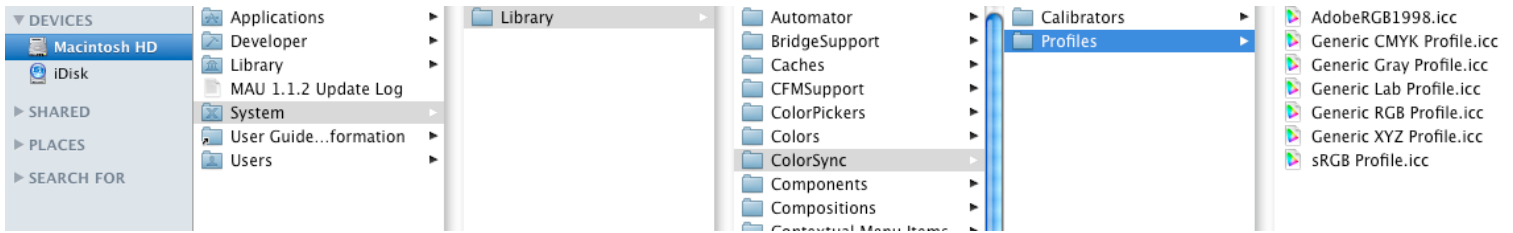
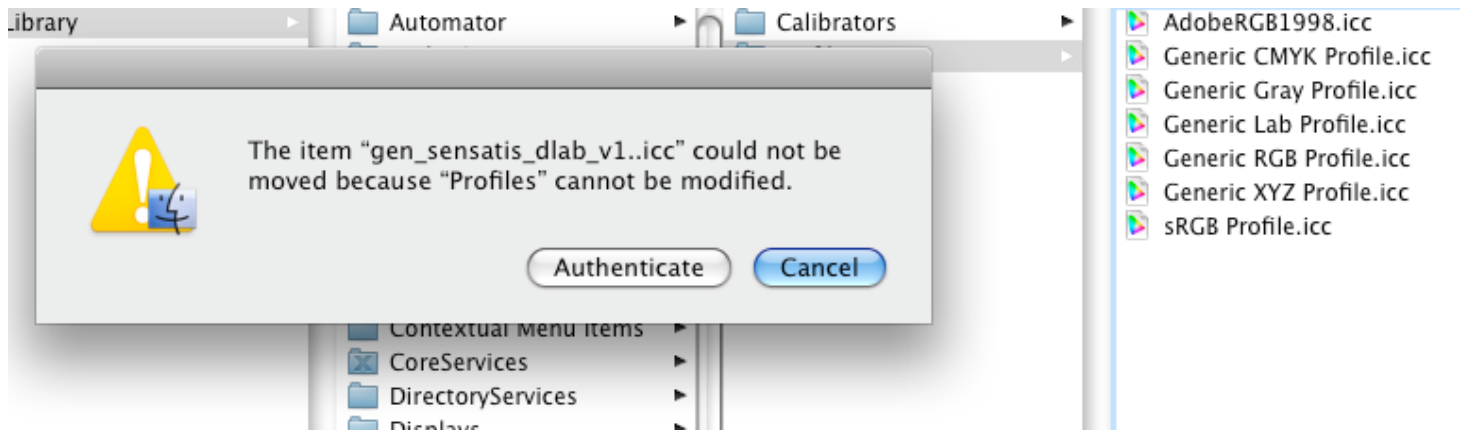


## How to install & use the ICC Profile

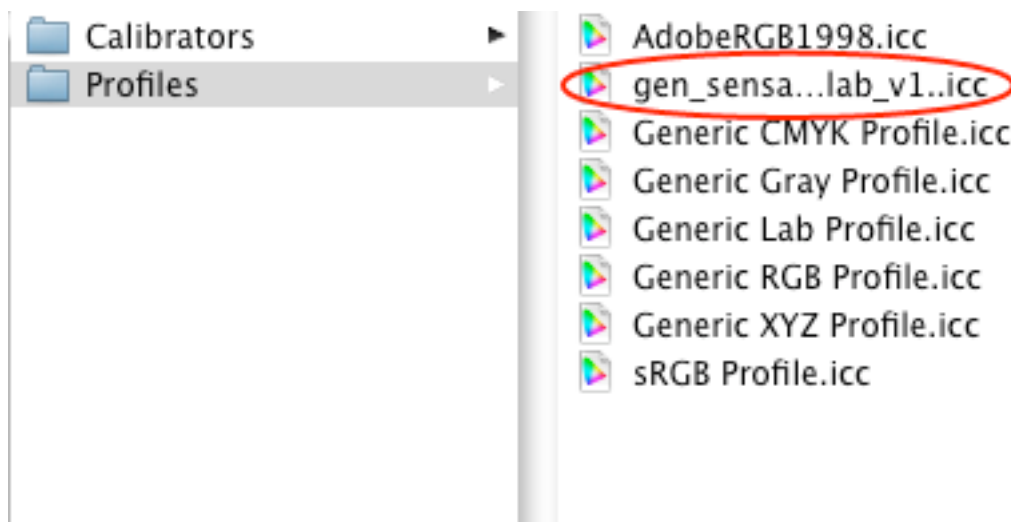
1] Go to your Macintosh Hard Drive > System > Library > ColorSync > Profiles



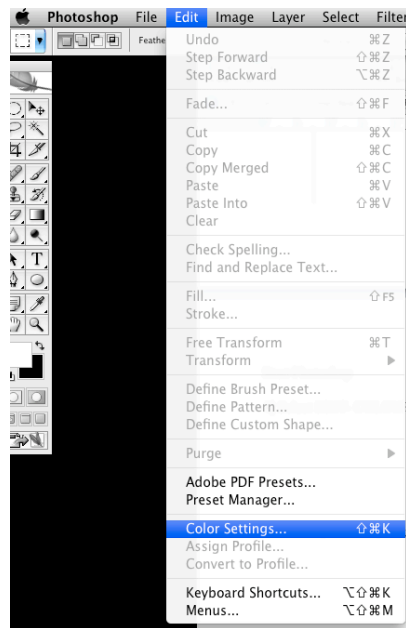
2] Drag the new ICC Profile "gen\_sensatis\_dlab\_v1" into the 'Profiles' folder. A dialogue box will appear asking you to authenticate the profile



3] Click Authenticate. The new ICC Profile will then appear in the 'Profiles' folder

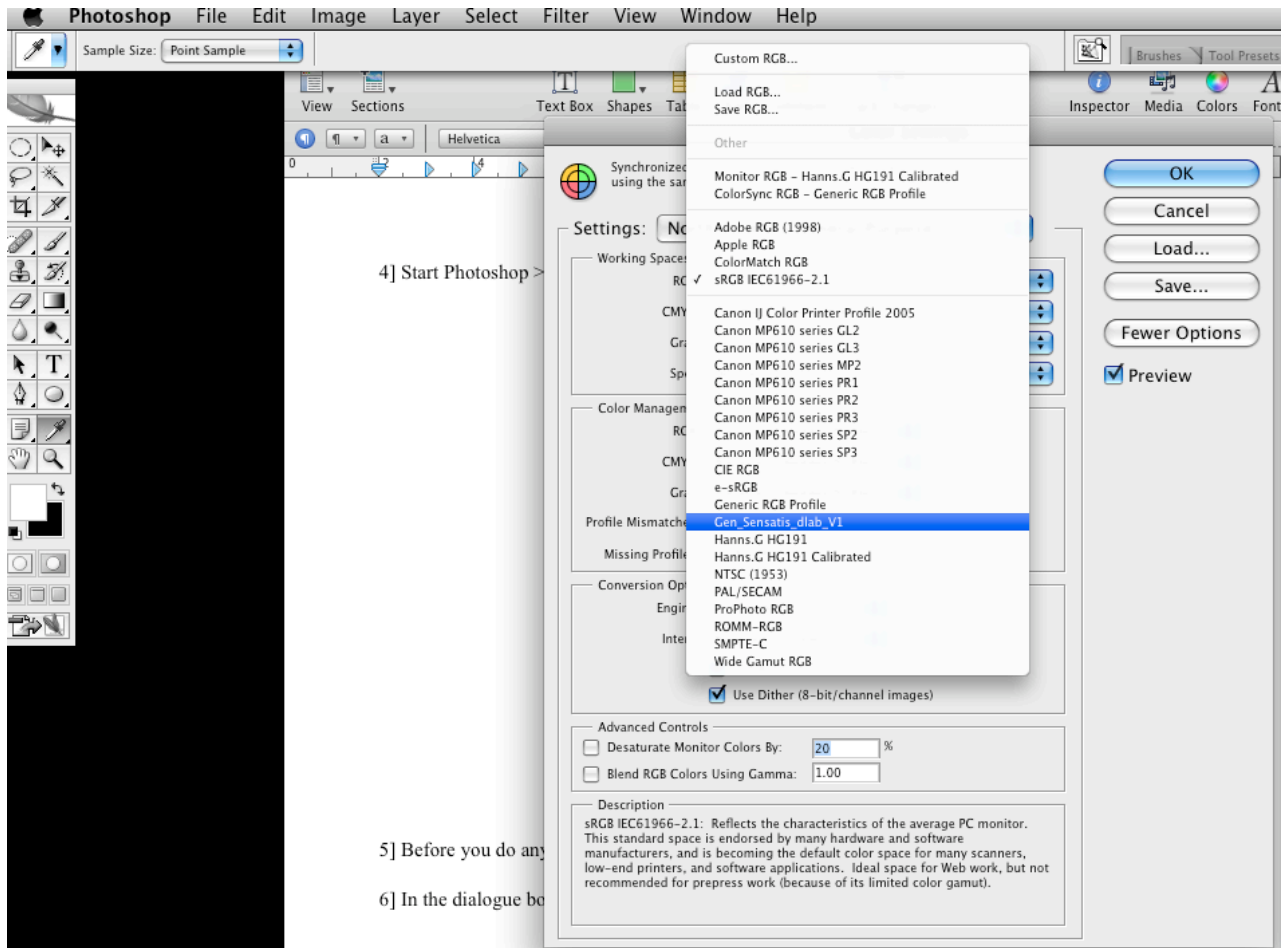


4] Start Photoshop > Select EDIT > COLOUR SETTINGS



5] Before you do anything SAVE you current setup!

6] In the dialogue box that opens choose the profile that you have just loaded



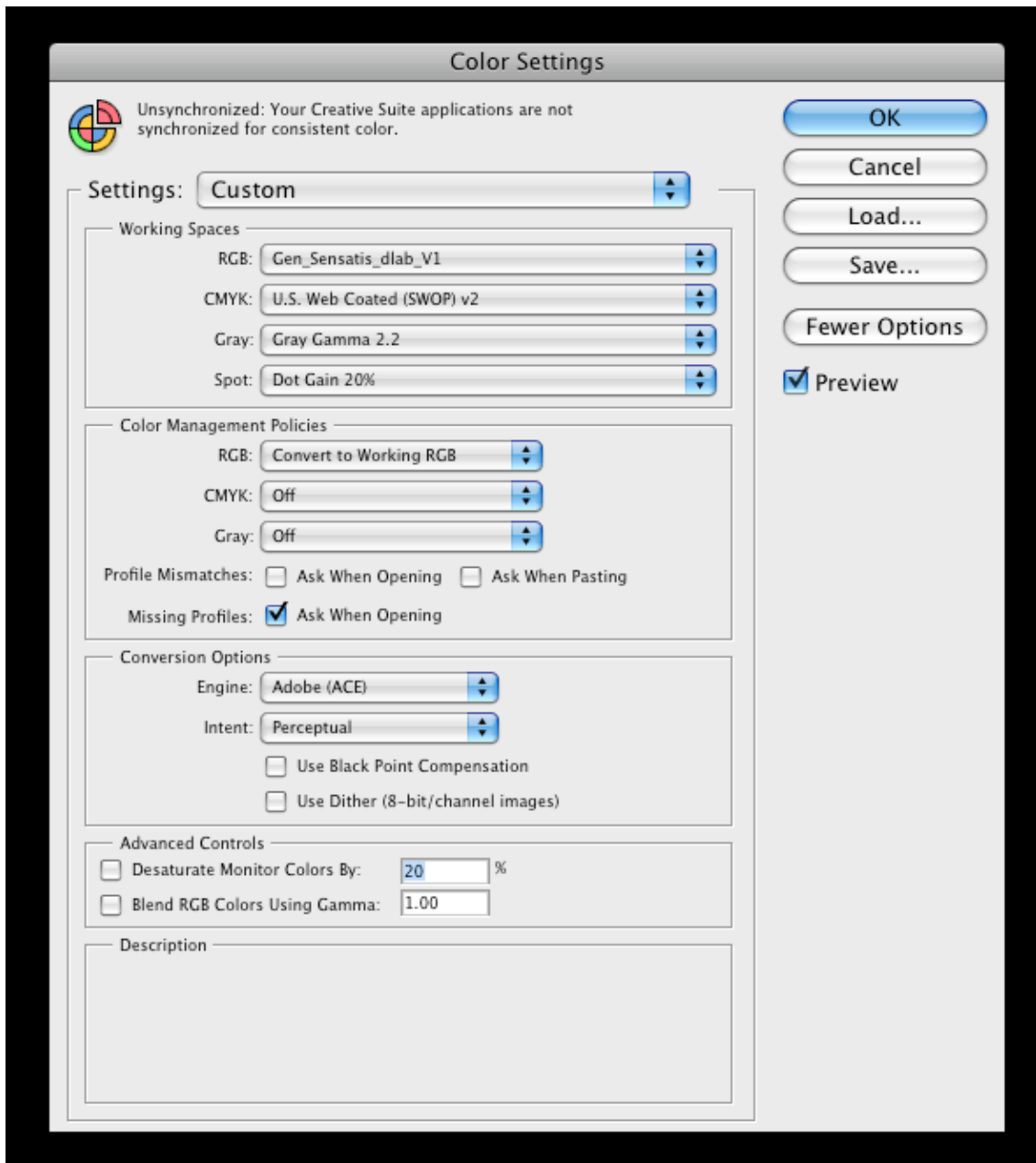
7] In the dialogue box select the following:

RGB: Convert to working RGB

Engine: Adobe (ACE)

Intent: perceptual

Everything else should be left at the default settings as below



**Now SAVE this Colour Setting as PRINTROOM**

8] Now load an image and correct it for colour and density under the PRINTROOM Colour settings, as you would normally do & save this file.

9] Email the corrected file to [dsetup@the-printroom.co.uk](mailto:dsetup@the-printroom.co.uk) (If you don't have email just post on CD)

10] We will send you back a printed copy of your picture. All you have to do now is compare it to what you see on screen. If there is a difference use your monitor controls to adjust the colour, brightness and saturation until the picture on the screen looks like the one in your hand.

Please set your monitors colour temperature to 6500k

If you are using an LCD monitor you will be unable to obtain a perfect match due to the nature of the monitor.

Your system should now match ours.

When choosing a file to use as a setup image we would suggest that you use a picture taken outside that includes a white and if possible some tarmac e.g. a picture of a house with a road in front, as you will be able to see any colour correction that is required with greater ease.